



## Vegetable Washer Vegetable Washer with Tank 10/40kg

ITEM # \_\_\_\_\_

MODEL # \_\_\_\_\_

NAME # \_\_\_\_\_

SIS # \_\_\_\_\_

AIA # \_\_\_\_\_



**660033 (LV300)**

Vegetable washer with fixed well capacity 300 lt, charge for cycle: 10/40 Kg

### Short Form Specification

Item No. \_\_\_\_\_

Made from 304 AISI stainless steel. Work area in non-toxic material.

Double inclined well bottom to allow automatic cleaning. Perforated stainless steel base filter easily removable; overflow and filter in 304 AISI stainless steel. Height-adjustable feet.

Washing system by water vortex; automatic water filling. Well capacity: 300 lt. Load per cycle: 10 kg (light vegetables); 40 kg (heavy vegetables). Cycle duration: 2-3 min.

### Main Features

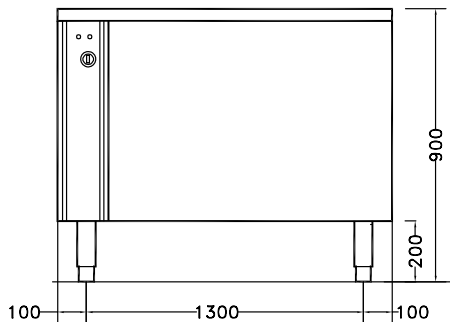
- Work area in non-toxic material compatible with the use of food.
- Double inclined well bottom to allow automatic cleaning of the unit.
- Washing well shaped to achieve an efficient water vortex.
- "Soft-action" manual ball valve regulates the wash water loading and pressure.
- Water inlet to unit via a solenoid valve.
- Simple control panel with a well drainage switch and knob to regulate recirculating water intensity.
- Cycle duration of 2 to 3 minutes.
- Mounted on adjustable stainless steel legs.
- IP25 protection against water jets, solid objects and small animals (larger than 6 mm).

### Construction

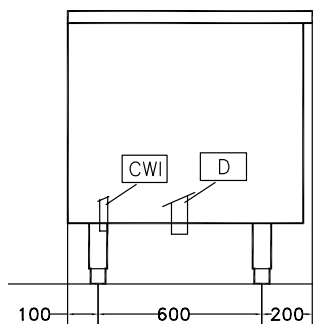
- 304 AISI stainless steel construction throughout.
- Wells to have a capacity of 10 kg of light vegetables or 40 kg of heavy vegetables per cycle.

APPROVAL: \_\_\_\_\_

Front

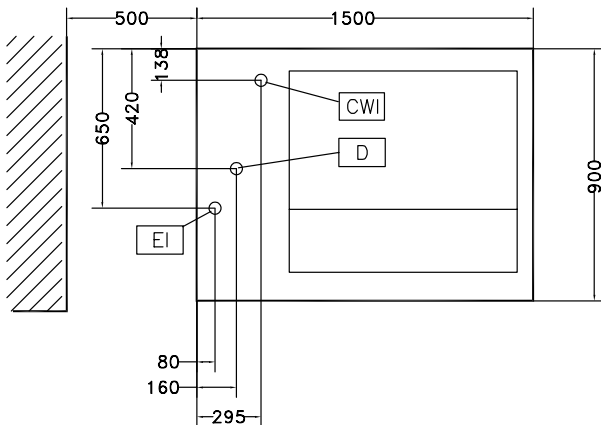


Side



- CWI** = Cold Water inlet 1 (cleaning)
- D** = Drain
- EI** = Electrical inlet (power)

Top



Electric

**Total Watts:**

**660033 (LV300)** 1.1 kW

Key Information:

|   |         |
|---|---------|
| <b>Usable well capacity:</b>              | 300 lt  |
| <b>Load per cycle - light vegetables:</b> | 10 kg   |
| <b>Load per cycle - heavy vegetables:</b> | 40 kg   |
| <b>External dimensions, Width:</b>        | 1500 mm |
| <b>External dimensions, Depth:</b>        | 900 mm  |
| <b>External dimensions, Height:</b>       | 850 mm  |
| <b>Shipping weight:</b>                   | 196 kg  |